



NIRALA
GLOBAL
WWW.NIRALAGLOBAL.COM



G3 ASPIRE NIRALA GOLD LLP

Office: Nirala Aspire, GH-03, Sector-16, Greater Noida (W), Gautam Buddha Nagar (UP)- 201308
Tel: 0120-4122010 | Email: info@niralaglobal.com | Web: www.niralaglobal.com Follow us

Disclaimer: The visual representation shown in this brochure are purely conceptual and for reference only and does not resemble any building structure and shall have no bearing, in any manner of booking made in this project and the developer reserve all rights, in this regard. This brochure is not a legal document.



Luxury
LOW RISE
APARTMENTS

RERA REGN. NO. UPRERAPRJ783018



Artistic Image



Actual Photograph, Ph-1





Actual Photograph, Ph-1

Nirala Aspire Phase-I, Delivered

A ready to move in high-rise society in sector-16, greater noida west. This society is equipped with an exclusive green area and swimming pool with many more amenities. The only project in the region to have low-rise segment along with high-rise gated community. Away from the maddening crowd, here living is a fine art. Living here is definitely like a legacy that you would pass on to the next generation as it seamlessly weaves technological innovations, convenience, and thoughtfulness amidst a safe and secure environment.

THE TIME IS NOW
TO CLAIM THIS
Masterpiece ON EARTH!!



Artistic rendering of the building structure and shall have no bearing. This brochure is not a legal document. *Contemporary*

Artistic Image

Disclaimer: The visual representation shown in this brochure are merely conceptual and for reference only and does not resemble any building structure and shall have no bearing in any manner of booking made in this project and the developer reserve all rights, in this regard. This brochure is not a legal document. ©2024/2025

where dreams fly,
desire chirp,
MOMENT TWEAK,
happiness blooms,
feeling mesmerize,
smile pout,
warmth deepens,
ecstasy glitters,

Where *Life*
grows





THE HEART OF YOUR NEIGHBOURHOOD

Your new neighbourhood will have social hubs that will cater to all your needs. Stroll to the supermarket and retail offerings, cafes and restaurants and be all set to witness and experience the energetic vibe & friendly atmosphere.



- Shopping Complex (approx 50 mtr)
- The Wisdom Tree School (Approx 100 mtr)
- Northern District Cricket Academy (approx 600 mtr)
- BLS World School (approx 500 mtr)
 - Petrol Pump (1 km)
- Gaur City Mall (approx 2 km)
- Hospitals (approx 3km)
 - NH-24
- Metro Station (approx 7 km)

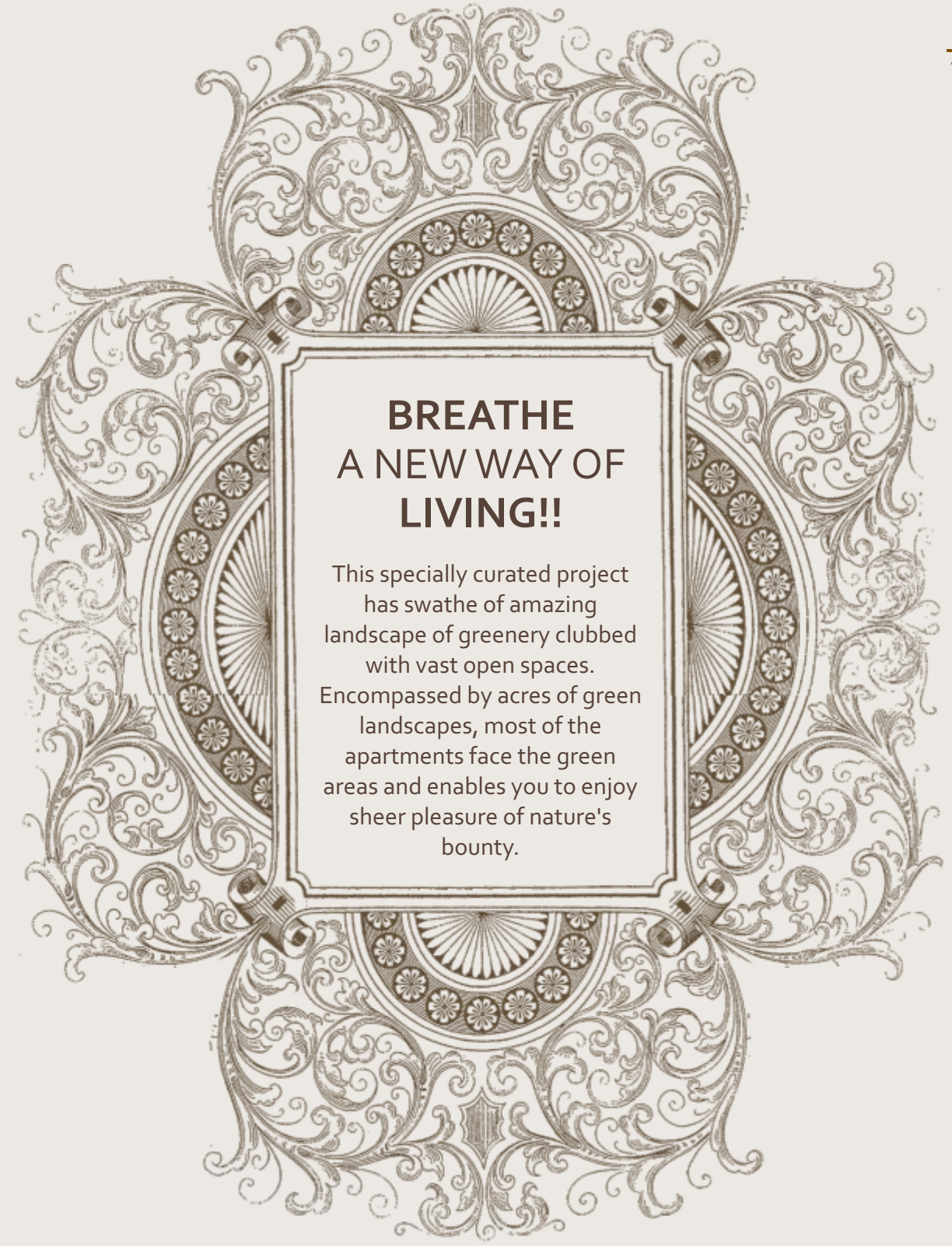
Disclaimer: The visual representation shown in this brochure are purely conceptual and for reference only and does not resemble any building structure and shall have no bearing in any manner of booking made in this project and the developer reserve all rights in this regard. This brochure is not a legal document. ©2020/2021



Disclaimer: The visual representation shown in this brochure are purely conceptual and for reference only and does not resemble any building structure and shall have no bearing in any manner of booking made in this project and the developer reserve all rights. In this regard, this brochure is not a legal document. © 2014 Aspire



Artistic Image



BREATHE A NEW WAY OF LIVING!!

This specially curated project has swathe of amazing landscape of greenery clubbed with vast open spaces. Encompassed by acres of green landscapes, most of the apartments face the green areas and enables you to enjoy sheer pleasure of nature's bounty.



A ONE-OF-A-KIND COMMUNITY

An irresistible invitation to enjoy the great outdoors waits for you. Now, you are all set to connect, relax and unwind while basking in the sun and enjoying a coffee from the café overlooking the manicured gardens



Artistic Image

Disclaimer: The visual representation shown in this brochure are purely conceptual and for reference only and does not resemble any building structure and shall have no bearing, in any manner of booking made in this project and the developer reserve all rights, in this regard. This brochure is not a legal document. *Conditions Apply



Artistic Image

THE BLISS OF BEING AT THE TOP ARTIFICIAL TERRACE GARDEN

Get ready to chill, relax and make your parties and hangouts with loved ones or co-workers, when you have a beautiful green serene terrace garden. With a dynamic and vibrant lifestyle, your heart is all set to beat faster. The opportunities and possibilities of the future come together right here.



EXPERIENCE THE POWER OF HOME AUTOMATION

We are essentially living in a technology driven smart age and the modern world has been revolutionized by the state-of-art know-how of automation. In fact, automation is the new science that has brought the age of smart homes, smart hotels and smart offices. And we at nerala delivers you exactly that. Our smart homes are here to make your life easy controlling your home when you are out.

SMART HOME FOR A SMARTER YOU !!



S P E C I F I C A T I O N S

1. FLOORING

Drawing Room, Kitchen and all Bedrooms: Vitrified Tiles 800X1600 mm (KAJARIA / SOMANY / EXXARO - STATUARIO / EQUIVALENT)
Balconies: Vitrified Tiles 600X600 mm In Matt Finish (KAJARIA / SOMANY / EXXARO / EQUIVALENT)
Toilets: Vitrified Anti Skid Tiles 600X600 mm

2. WALLS & CEILING FINISH

Toilets: Designer Vitrified Wall Tiles Of Size 600X1200 mm Upto Beam Level
Ceiling Finish: Finished Walls & Ceiling With OBD On Punning Surface, False Ceiling In Living & Dining With Side Cove & Lighting.

3. KITCHEN

Kitchen Counter: Granite Working Top & Stainless Steel Single Sink With Drain board
Above Counter: 2'-0" Dado Above The Working Top With Vitrified Tiles

4. TOILETS PLUMBING

Chinaware: Sanitary Ware Of Jaquar / Imported Or Equivalent (JAQUAR / EQUIVALENT)
CP Fitting: CP Fitting of Jaquar / Imported Or Equivalent (JAQUAR / EQUIVALENT)
Washbasin: Counter top Washbasin With Vanity

5. DOORS & WINDOWS

Outer Doors: External Door and Window 8' Hight of UPVC / Powder coated Aluminium With Glass & SS Mesh
Internal Doors: Internal Door With Hardwood Marandi Door Frame of 8' Hight With Paneling and Flush Door With Veneer Look MICA Lamination.
Main Door: Main Entry Door (8' Hight) Frame of Marandi Or Equivalent With Paneling With Flush Door Of Veneer Look MICA Lamination
Additional Main Door: Designer SS Door (304 Grade)

6. RAILING

Balcony Railing: Balcony Railing of SS (304 Grade)With Toughened Glass
Staircase Railing: Staircase Railing of SS 304 Grade

7. LIFT LOBBY

Passenger Elevators: OTIS Elevators With Aura Gold Finish, Access upto Terrace
Lift Car Flooring: Lift Flooring With Z Black Granite Stone
Lift Lobby Floor: Combination Of Italian (Egyptian) with Granite
Lobby False Ceiling: Lift Lobby False Ceiling With Lights

8. ELECTRICAL

Wiring: FRLS Copper Wire In PVC Conduits With MCB Supported Circuits (ISI Marked)/ Equivalent and Adequate Number of Points And Light Points On Ceiling (ISI Marked)
Switch/Sockets: Modular Type Switch Sockets / Touch Screen Switch Sockets (SCHNEIDER/PHILIPS/ISI MARKED)

9. TV & TELEPHONE

Intercom: One Landline Connection With Intercom Facilities
DTH/IPTV Connection: Provision For DTH/IPTV Connection

10. POWER BACKUP

Common Areas: 100% DG Power Back-Up For All Common Areas
Individual Flat: 100% DG Power Back-Up Available To Individual Flat on Paid Basis

11. SECURITY SYSTEM

Access Control System: Secured Gated Community With Intercom, Access Control System in Each Tower Entry
Lobby Area (Ground Floor): Lobby Covered With Toughened Glass With Access Control

12. TERRACE

Landscape At Terrace: Artificial Landscape & Walkway At Terrace

13. HOME AUTOMATION

Light, Fan, AC, TV & Geyser Digital Door Lock & Curtains Optional

14. WOOD WORK

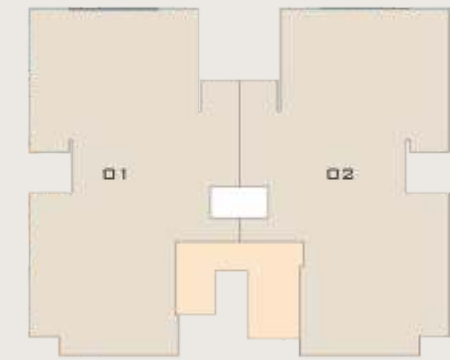
Lower & Upper Cabinets in Kitchen Wardrobe in All Bedrooms



SITE PLAN, ASPIRE NIRALA GOLD, PH-II



UNIT PLAN

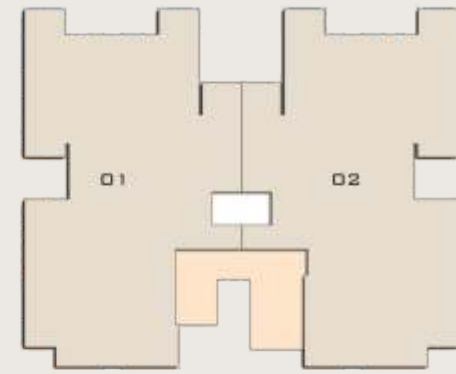


TOWER-B2 TO B7

KEY PLAN
FIRST FLOOR UNIT PLAN (3 BED + 3 TOI + SERVANT)
CARPET AREA = 1102 SQ.FT.
BUILT UP AREA = 1373 SQ.FT.
TOTAL AREA = 1784 SQ.FT.
TERRACE AREA = 129 SQ.FT.

2 A CORE TOWER

UNIT PLAN

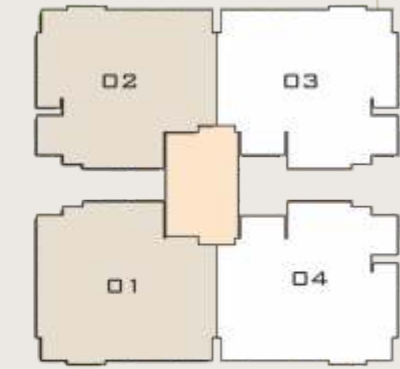


TOWER-B2 TO B7

KEY PLAN
 TYPICAL UNIT PLAN (3 BED + 3 TOI + SERVANT)
 CARPET AREA = 1102 SQ.FT.
 BUILT UP AREA = 1373 SQ.FT.
 TOTAL AREA = 1784 SQ.FT.

2 A CORE TOWER

UNIT PLAN

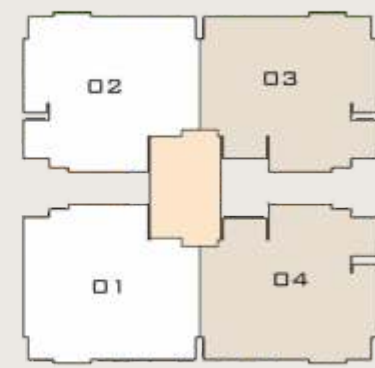


TOWER-B8 TO B-10, B12, B14

KEY PLAN
 TYPICAL UNIT PLAN (3 BED + 3 TOI)
 CARPET AREA = 923 SQ.FT.
 BUILT UP AREA = 1210 SQ.FT.
 TOTAL AREA = 1579 SQ.FT.

4 A CORE TOWER

UNIT PLAN



TOWER-B8 TO B-10, B12, B14

KEY PLAN
 TYPICAL UNIT PLAN (3 BED + 3 TOI)
 CARPET AREA = 923 SQ.FT.
 BUILT UP AREA = 1223 SQ.FT.
 TOTAL AREA = 1596 SQ.FT.

4 A CORE TOWER

About The Nirala Global

Soaring high on growth path with proven track record and leadership, the nirala group is a dynamic real estate development organization, which has evolved on the basic principle of 'customer first'. Set up with an aim to offer quality, transparency and credibility to its esteemed customers, the company has carved a niche for itself and is all set to become one of the leading developers in delhi ncr. The company envisions a future wherein nirala would be a name to reckon with in india. Moreover, the long-standing mission of the company is to deliver best quality infrastructure in the minimum possible cost to the customer. With this commitment the group aspires to significantly contribute towards improving the quality of life of its customers. Setting high standards in both residential and commercial segments, the group only commits what it intends to deliver.

Zest of creating a new world.
 Joy of deeds well done.

